



FHA SINGLE FAMILY LOAN PERFORMANCE TRENDS

Credit Risk Report

Office of Risk Management and Regulatory Affairs,
Office of Evaluation, Reporting & Analysis Division

APRIL
2018

Table of Contents

Table 1. Delinquency Rates by Month	2
Table 2. New 90+ Day Delinquencies by Reason for Delinquency	3
Table 3. Delinquency Rates by Loan and Property Characteristics	4
Table 4. REO Components of Loss by Property Disposition Month	6

Table of Figures

Figure 1. Serious Delinquency Rate by Fiscal Year	7
Figure 2. Failure Rate by Fiscal Year	8

Table 1. Delinquency Rates by Month

Month	Active Insurance in Force (EOM)	Delinquency Rates ^a (%)			Exceptions ^b (%)		Serious Delinquency Rate ^c (%)
		30-day	60-day	90-day	In Foreclosure	In Bankruptcy	
Non-Seasonally Adjusted							
Apr 2017	7,917,975	4.63	1.32	2.17	1.44	0.86	4.47
May	7,934,510	4.32	1.37	2.09	1.41	0.86	4.36
Jun	7,950,029	4.37	1.39	2.07	1.37	0.85	4.28
Jul	7,962,527	4.51	1.44	2.08	1.30	0.82	4.20
Aug	7,973,604	4.64	1.52	2.13	1.30	0.81	4.24
Sep	7,982,070	5.77	1.70	2.36	1.19	0.77	4.32
Oct	7,986,663	5.53	2.11	2.46	1.18	0.78	4.42
Nov	7,988,634	5.22	2.22	2.88	1.16	0.79	4.83
Dec	7,989,699	5.57	1.96	3.23	1.17	0.79	5.19
Jan 2018	8,005,645	4.96	1.81	3.24	1.14	0.80	5.18
Feb	8,007,772	4.84	1.66	3.09	1.16	0.81	5.06
Mar	8,007,182	4.16	1.40	2.68	1.15	0.84	4.66
Apr	8,012,065	4.26	1.37	2.56	1.13	0.85	4.54
Seasonally Adjusted							
Apr 2017	7,917,975	5.04	1.52	2.26	1.44	0.86	4.56
May	7,934,510	4.48	1.49	2.15	1.43	0.87	4.46
Jun	7,950,029	4.39	1.44	2.15	1.37	0.84	4.36
Jul	7,962,527	4.50	1.45	2.19	1.30	0.82	4.31
Aug	7,973,604	4.48	1.48	2.18	1.31	0.81	4.31
Sep	7,982,070	5.56	1.61	2.36	1.21	0.77	4.34
Oct	7,986,663	5.37	1.98	2.44	1.20	0.77	4.41
Nov	7,988,634	4.76	2.00	2.76	1.17	0.78	4.71
Dec	7,989,699	5.06	1.71	3.03	1.16	0.79	4.98
Jan 2018	8,005,645	4.75	1.64	3.02	1.13	0.80	4.95
Feb	8,007,772	5.00	1.69	3.00	1.13	0.81	4.95
Mar	8,007,182	4.82	1.62	2.76	1.12	0.85	4.73
Apr	8,012,065	4.63	1.57	2.67	1.12	0.85	4.65

EOM = end of month.

^a The 90-day category includes all loans that are at least 3 months delinquent excluding those loans in foreclosure or bankruptcy processing. Included in the delinquency counts are loans under active consideration for loss mitigation foreclosure avoidance.

^b Exceptions are counted separately from delinquencies, regardless of the length of the delinquency period.

^c Serious delinquency rates are the sum of 90-day delinquencies plus in-foreclosures and in-bankruptcies.

SOURCE: U.S. Department of HUD/FHA, May 2018.

Table 2. New 90+ Day Delinquencies by Reason for Delinquency

Fiscal Year and Quarter	New 90+ Day Delinquencies	Share by Reason for Delinquency (%)						
		Reduction of Income	Unemployed	Excessive Obligations	Death or Illness of Principal Borrower or Family	Marital Difficulties	No Contact	Other ^a
2011 Q2	117,906	37.35	10.22	16.09	10.12	4.52	12.02	9.68
2011 Q3	99,256	36.68	10.40	16.47	10.65	4.88	10.80	10.12
2011 Q4	133,827	37.32	10.22	17.49	10.94	4.76	9.40	9.88
2012 Q1	158,091	36.54	9.45	19.14	11.09	4.50	9.27	10.01
2012 Q2	114,762	37.13	9.99	17.60	11.34	4.75	8.58	10.61
2012 Q3	101,467	36.78	9.71	17.54	11.68	4.97	8.37	10.95
2012 Q4	125,200	36.78	9.50	18.05	11.85	4.65	8.15	11.03
2013 Q1	124,359	36.21	8.98	18.43	12.01	4.65	8.21	11.51
2013 Q2	104,165	35.80	8.80	18.01	12.22	4.52	8.19	12.45
2013 Q3	86,810	35.92	8.28	18.07	12.36	4.59	8.49	12.29
2013 Q4	105,090	36.31	8.29	19.04	12.38	4.57	8.75	10.66
2014 Q1	112,099	35.30	7.93	20.44	12.16	4.46	9.21	10.49
2014 Q2	93,183	34.73	8.03	19.64	11.79	4.31	10.70	10.79
2014 Q3	80,881	33.26	7.91	19.90	12.27	4.35	11.28	11.04
2014 Q4	101,850	32.50	7.52	20.89	12.60	4.41	11.42	10.66
2015 Q1	106,665	31.75	6.98	21.94	12.71	4.23	11.65	10.73
2015 Q2	82,866	32.21	7.12	21.56	12.56	4.19	11.46	10.89
2015 Q3	71,869	30.85	6.65	21.32	12.69	4.24	13.06	11.19
2015 Q4	88,263	30.57	6.63	22.18	12.72	3.98	12.10	11.82
2016 Q1	92,607	30.65	6.46	22.58	12.97	4.04	11.25	12.05
2016 Q2	78,978	30.14	6.79	22.80	12.83	3.93	11.76	11.75
2016 Q3	66,500	30.85	6.85	23.18	13.34	4.15	10.51	11.12
2016 Q4	85,289	31.76	7.18	23.87	13.12	4.03	9.35	10.68
2017 Q1	94,958	31.21	6.94	24.40	13.10	3.77	8.95	11.62
2017 Q2	75,376	31.25	7.22	24.23	13.23	3.84	9.59	10.65
2017 Q3	65,531	29.90	7.48	24.51	13.84	3.92	9.52	10.83
2017 Q4	87,286	29.88	7.91	24.71	12.91	3.77	8.85	11.98
2018 Q1	157,585	21.69	5.08	19.64	8.30	2.25	7.42	35.62
2018 Q2	88,660	25.18	7.03	23.33	11.30	2.90	10.82	19.43
2018 Q3-Apr	19,914	23.45	7.44	22.30	11.28	2.81	15.36	17.37

^a Includes abandonment of property, distant employment transfer, neighborhood problems, property problems, inability to sell or rent property, military service, business failure, casualty loss, energy-environment cost, servicing problems, payment adjustment, payment dispute, and transfer of ownership pending fraud and incarceration.

SOURCE: U.S. Department of HUD/FHA, May 2018.

Table 3. Delinquency Rates by Loan and Property Characteristics

	IIF Shares ^a	Rates of Active Loan Counts (%)						Serious Delinquency Rate ^c
		All Past Due ^b	30-Day	60-Day	90+ Day	In Foreclosure	In Bankruptcy	
Loan Purpose								
All Active Loans	8,012,065	10.17	4.26	1.37	2.56	1.13	0.85	4.54
Purchase	67.73	10.97	4.62	1.52	2.83	1.12	0.87	4.82
Refinance	32.27	8.50	3.51	1.04	2.00	1.16	0.79	3.95
Refinance								
Refinance Loans	2,585,293	8.50	3.51	1.04	2.00	1.16	0.79	3.95
Conventional	34.28	9.89	3.94	1.19	2.33	1.52	0.92	4.76
No Cash Out	21.34	9.71	3.91	1.16	2.24	1.47	0.93	4.64
Cash Out	12.95	10.19	4.00	1.24	2.46	1.60	0.90	4.96
FHA	11.68	6.54	2.80	0.79	1.68	0.69	0.58	2.94
No Cash Out	6.38	6.63	2.83	0.79	1.65	0.73	0.63	3.01
Cash Out	5.30	6.43	2.77	0.80	1.72	0.63	0.51	2.87
Streamline	54.04	8.04	3.39	1.00	1.86	1.04	0.75	3.65
Credit Score Range^d								
Loans with Credit Scores	6,160,939	9.82	4.13	1.31	2.54	1.05	0.79	4.38
< 500	0.13	30.59	9.67	3.51	8.36	5.04	4.00	17.41
500–579	2.00	29.90	10.90	3.87	7.47	4.30	3.36	15.12
580–619	7.25	20.38	8.20	2.81	5.13	2.41	1.83	9.37
620–659	30.35	14.17	6.06	1.93	3.67	1.35	1.15	6.17
660–719	39.56	7.04	3.05	0.91	1.85	0.73	0.50	3.08
720–850	20.72	3.01	1.25	0.37	0.80	0.40	0.19	1.39
Fiscal Year Cohort								
All Cohorts	8,012,065	10.17	4.26	1.37	2.56	1.13	0.85	4.54
pre-2004	7.53	16.36	6.87	2.49	3.73	1.83	1.43	7.00
2004	1.99	16.69	6.92	2.41	3.79	2.00	1.57	7.36
2005	1.44	18.65	7.45	2.64	4.32	2.41	1.83	8.55
2006	1.13	21.52	8.04	2.92	4.99	3.43	2.13	10.56
2007	1.08	25.41	8.87	3.09	6.27	4.42	2.75	13.44
2008	2.56	25.65	8.95	3.10	6.37	4.53	2.69	13.59
2009	5.58	16.98	6.42	2.11	3.94	2.81	1.70	8.45
2010	7.18	12.34	4.96	1.56	2.89	1.73	1.19	5.82
2011	5.79	10.23	4.22	1.32	2.45	1.24	0.99	4.68
2012	7.10	8.54	3.53	1.16	2.12	0.89	0.85	3.85
2013	9.87	7.25	3.06	0.93	1.82	0.74	0.70	3.26
2014	4.84	11.52	4.77	1.51	3.02	1.18	1.04	5.24
2015	9.14	9.52	4.05	1.27	2.71	0.79	0.70	4.20
2016	12.96	7.91	3.49	1.07	2.41	0.52	0.42	3.35
2017	14.56	5.80	2.94	0.84	1.66	0.21	0.14	2.01
2018	7.24	1.66	1.29	0.23	0.13	0.01	0.01	0.14

Table 3. Delinquency Rates by Loan and Property Characteristics

	IIF Shares ^a	Rates of Active Loan Counts (%)						Serious Delinquency Rate ^c
		All Past Due ^b	30-Day	60-Day	90+ Day	In Foreclosure	In Bankruptcy	
Loan Amount at Origination (\$ thousands)								
All Loan Amounts	8,012,065	10.17	4.26	1.37	2.56	1.13	0.85	4.54
< 50	3.04	12.22	5.33	1.69	2.45	1.78	0.96	5.20
50–99	22.84	11.64	4.93	1.62	2.61	1.43	1.04	5.08
100–149	27.92	10.61	4.46	1.43	2.64	1.10	0.97	4.71
150–199	20.00	9.61	4.03	1.28	2.56	0.96	0.77	4.29
200–249	11.76	8.85	3.66	1.14	2.50	0.90	0.64	4.04
250–399	11.95	8.73	3.54	1.11	2.51	1.00	0.56	4.07
400–499	1.52	7.50	3.02	0.94	2.02	1.05	0.46	3.53
> 499	0.96	6.51	2.56	0.81	1.75	1.02	0.38	3.15
Property Type								
All Property Types	8,012,065	10.17	4.26	1.37	2.56	1.13	0.85	4.54
Detached	86.56	10.18	4.32	1.38	2.56	1.06	0.85	4.47
Manufactured Housing	3.19	12.00	4.77	1.49	2.60	2.01	1.13	5.74
2–4 Units	2.06	9.58	3.23	1.07	2.28	2.40	0.60	5.28
Condo	3.25	8.00	3.01	1.01	2.26	1.12	0.61	3.98
Townhouse	4.95	10.60	4.18	1.40	2.90	1.35	0.78	5.02
Purchase Loan Type								
All Purchase Loans	5,426,231	10.97	4.62	1.52	2.83	1.12	0.87	4.82
Repeat	17.98	8.92	3.92	1.20	2.18	0.90	0.72	3.80
First-time	82.02	11.42	4.78	1.59	2.97	1.16	0.91	5.04
Down Payment Assistance (DPA) Type								
All Sources of Funds	8,012,065	10.17	4.26	1.37	2.56	1.13	0.85	4.54
Government	6.53	11.74	4.83	1.63	3.18	1.07	1.03	5.28
Relative	15.55	12.17	5.26	1.72	3.19	1.15	0.85	5.19
Other	2.21	18.13	7.20	2.55	4.24	2.07	2.07	8.38
Seller Funded	0.64	29.52	9.96	3.76	7.62	4.45	3.71	15.79
No DPA	75.07	9.22	3.87	1.22	2.29	1.08	0.77	4.13

IIF = insurance in force.

^a For each subpanel, the loan shares sum to 100%. However, in some of the subpanels, the total loans in the analysis do not sum to 100% of IIF. For example, the IIF shares for refinance loans sum to 100% of refinance loans. Streamline refinance loans are not included in the Credit Score Range analysis; the IIF shares in that panel, add to 100% of fully-underwritten loans.

^b Includes all loans 30 or more days past due, including those in bankruptcy or foreclosure.

^c Includes all loans 90 days past due plus all in-bankruptcy and in-foreclosure cases.

^d Credit score reporting began in May 2004 but was not mandatory until July 2008. Streamline refinance loans do not require credit score reporting.

SOURCE: U.S. Department of HUD/FHA, May 2018.

Table 4. REO Components of Loss by Property Disposition Month

Disposition Month	2018			2017									
	Mar	Feb	Jan	Dec	Nov	Oct	Sep	Aug	Jul	Jun	May	Apr	Mar
Loss Components as Percentage of Defaulted Loan Balance													
Claim Expenses ^a	18.43	17.98	18.72	18.75	19.02	18.83	18.72	20.01	18.95	19.34	19.74	19.92	19.65
Holding Costs ^b	4.64	4.40	4.67	4.84	4.85	4.82	4.95	5.04	4.70	4.72	4.79	5.32	4.81
Loss on Collateral ^c	28.30	29.54	29.49	28.88	28.37	30.03	28.50	29.79	28.84	28.93	29.03	29.09	31.57
Sales Expense	4.51	4.58	4.32	4.36	4.42	4.32	4.42	4.45	4.62	4.47	4.56	4.67	4.40
Program Discounts ^d	0.21	0.30	0.26	0.17	0.38	0.04	0.08	0.12	0.40	0.22	0.13	0.19	0.16
Net Loss Rate ^e	47.40	51.25	52.22	53.18	53.87	55.39	55.72	59.13	57.05	57.45	58.13	58.94	60.36
Average Amount (\$)													
Average Dollar Loss	55,327	60,851	61,062	62,878	63,535	67,620	67,000	71,118	68,917	69,414	70,220	72,617	72,945
Average Unpaid Balance	116,730	118,725	116,935	118,227	117,947	122,076	120,234	120,279	120,798	120,834	120,803	123,207	120,843
Occurrence Count													
Number of Dispositions	2,145	2,342	2,266	2,403	2,218	2,357	2,450	2,865	2,622	3,351	3,704	3,557	4,526
Number of Discounts	10	16	6	10	5	3	6	11	15	21	14	19	25
Stage	Average Time in Months												
Delinquency ^f	12.1	12.5	12.4	12.1	12.6	12.4	13.3	13.1	12.9	13.2	13.2	13.2	13.2
Foreclosure ^g	13.5	13.0	13.0	13.0	12.9	13.3	13.0	14.6	13.8	13.9	13.6	14.0	13.5
Deed Transfer ^h	14.4	13.3	13.1	13.1	13.5	13.7	13.0	12.9	12.3	12.3	12.3	12.1	11.9
REO	4.3	4.3	4.3	4.3	4.6	4.7	4.6	4.7	4.6	4.6	4.7	4.9	5.1
All Stages	44.1	43.1	42.7	42.6	43.7	44.1	43.9	45.3	43.5	44.0	43.7	44.1	43.6

^a Includes interest on principal.

^b Management, maintenance, repairs, administration, and security, net of rent and other income.

^c Value when foreclosed (UPB) minus value received in REO; does not include Streamline refinances.

^d Rate over all dispositions; effect is greater in the cases where a discount actually is given.

^e Profit (loss) divided by Unpaid Principal Balance (UPB). The listed cost categories are not exhaustive, and they will not sum to the loss rate.

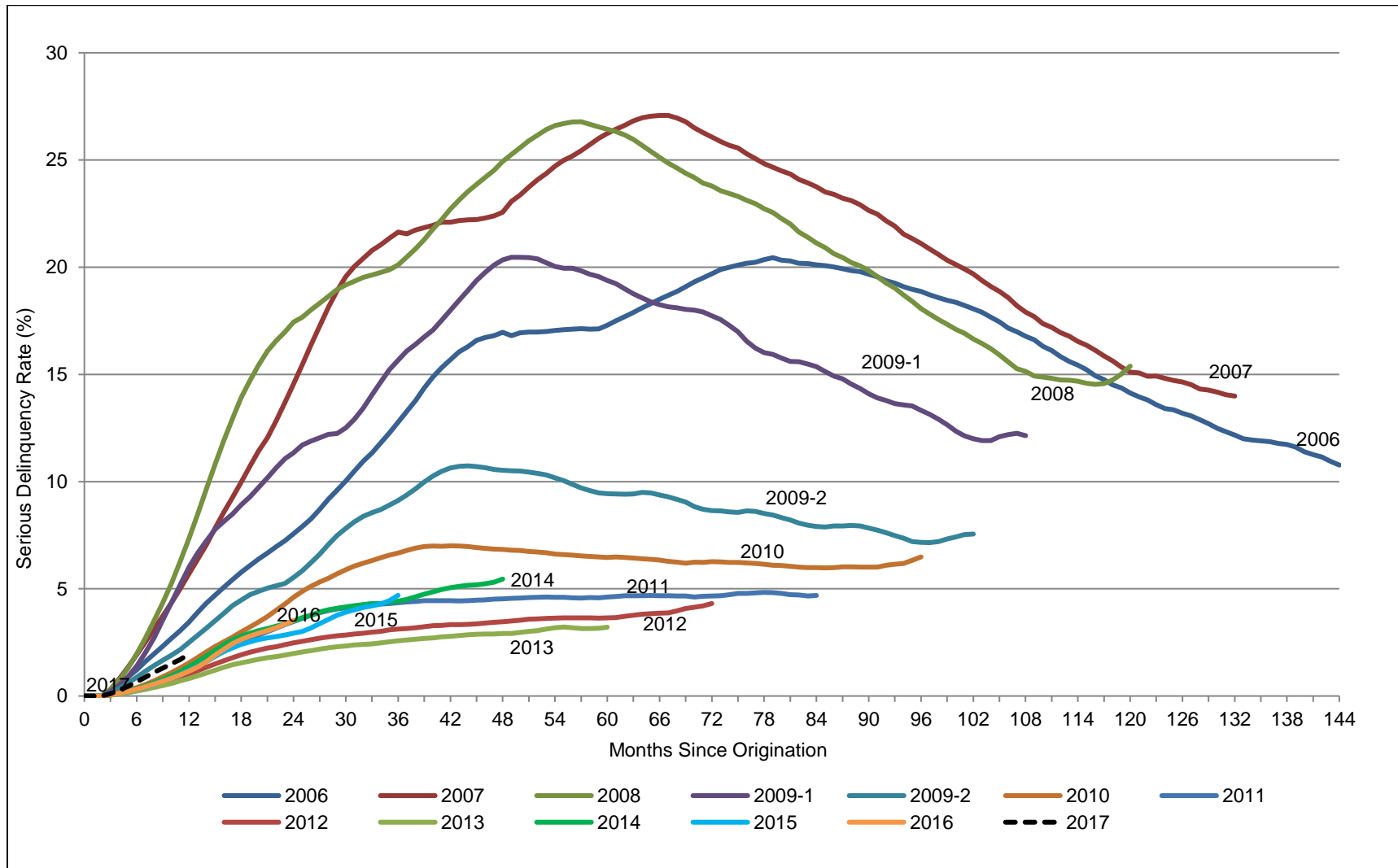
^f First missed payment to date foreclosure initiated.

^g Initiation of foreclosure proceedings to auction date.

^h Auction date to HUD acquisition date.

SOURCE: U.S. Department of HUD/FHA, May 2018.

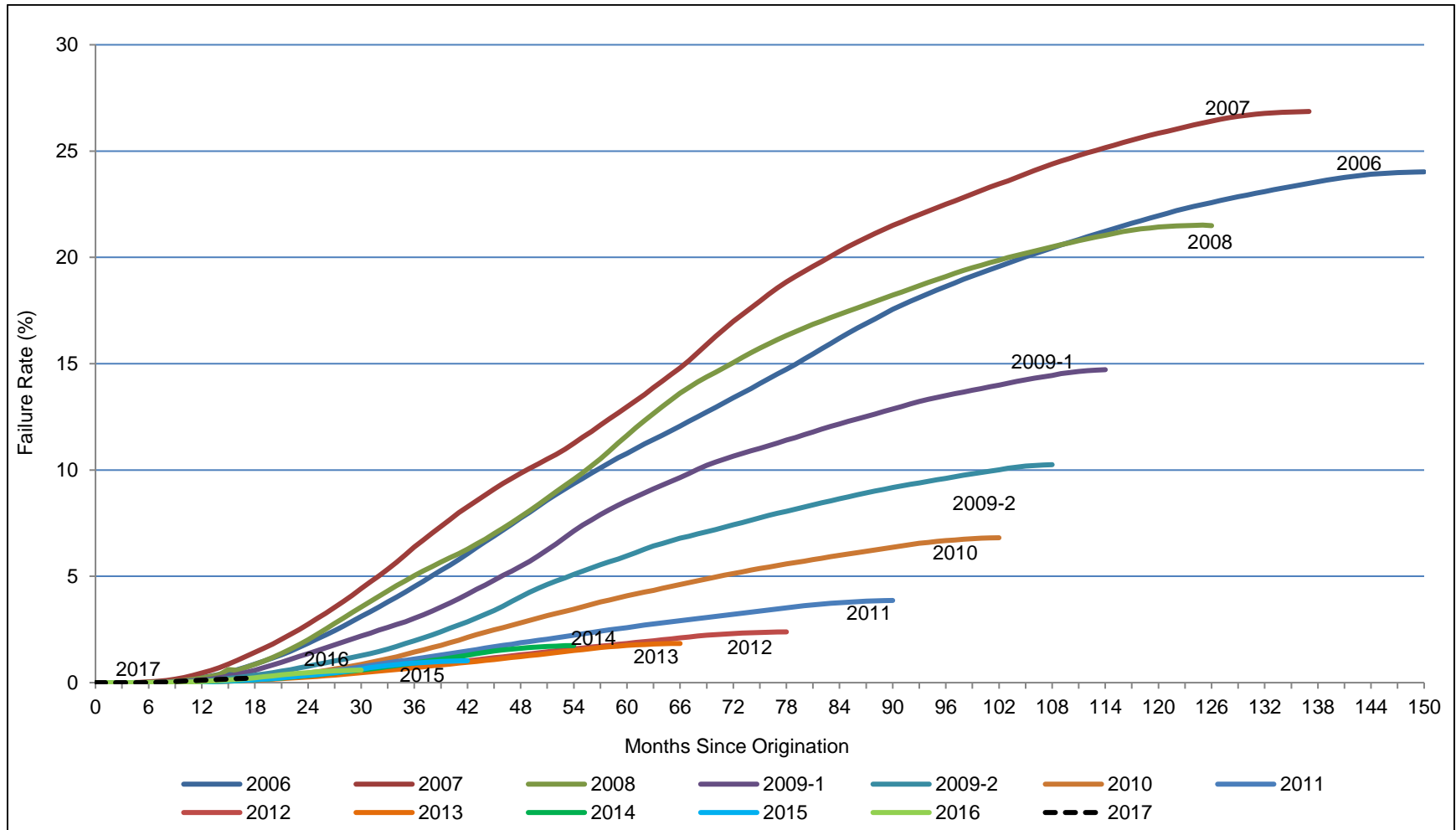
Figure 1. Serious Delinquency Rate by Fiscal Year



NOTE: The FY 2009 cohort is separated into two parts, representing loan originations from October through March in 2009-1 and loan originations from April through September in 2009-2. The last six months of the origination period have been removed to ensure seasoning of loans.

SOURCE: U.S. Department of HUD/FHA, May 2018.

Figure 2. Failure Rate by Fiscal Year



NOTES: The FY 2009 cohort is separated into two parts, representing loan originations from October through March in 2009-1 and loan originations from April through September in 2009-2. A loan that is in foreclosure processing or has gone to claim is deemed to be a 'failure' for this illustration. The failure rate is the sum of Cumulative Claim Rate and Cumulative Active Foreclosure Rate divided by Total Loans.

SOURCE: U.S. Department of HUD/FHA, May 2018.